

ABOUT THE AREA

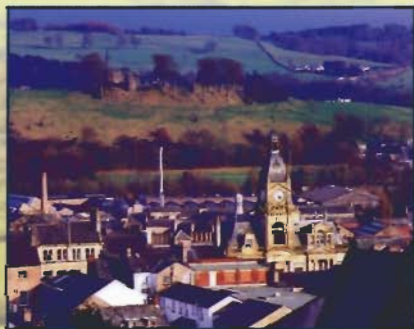


Nestled under the Howgill Fells in probably the most favoured position in the surrounding area, and situated in the National Park, Ash Hining Farm is only 15 miles from the Yorkshire Dales town of Hawes and 20 miles from Windermere in the Lake District. The small market town and book centre of Sedbergh is one mile away and Dent, one of the most picturesque villages in the Dales is just 5 miles away.

Perfectly positioned for walking, three specially routed walks, from the doorstep, from four to eight miles have been designed for your pleasure. For parties of 4 or more a walking guide can be arranged.



We can arrange guided walks with an experienced guide or you can walk independently, the property is a great stop-off point on the celebrated Dales Way.



ASH HINING SELF-CATERING COTTAGES

Dales View and Whernside View occupy a most enviable position on the fellside and so enjoy uninterrupted vistas of this beautiful part of the world. The properties have been created from two redundant farm buildings and now offer excellent, high quality facilities with many retained characterful features, the cottages having a mix of slate and oak floors and original oak beams.

Dales View and Whernside View really are the perfect place for that 'getting away from it all' holiday, be it honeymoon, first or second time around, or any other occasion. A courtesy lift is available for guests who would like to dine out in nearby Sedbergh.



ASH HINING FARM

Howgill, Sedbergh, Cumbria LA10 5HU

Tel: 07774 281767

Email: info@ashhiningfarm.co.uk

www.ashhiningfarm.co.uk



A SELECTION OF WALKS IN THE HOWGILLS FROM ASH HINING FARM

WALKS FOR ALL SEASONS

WALK 1

Quaker Trails - 4½ miles or 7 miles **Moderate**

From Ash Hining at the bottom of the yard take a sharp right across the paddock through a gate and follow the wall to the road.

Turn right up the hill for 200 yards with the footpath over the wall on your left. Down the field past a shed with stile on the right. Turn left down the field to bottom left hand corner, a small stile will take you over the wall. Low Branthwaite is straight ahead, bear right onto the Dales Way for approximately 1¼ miles.

The first cottage you pass on the right, Draw-well, is where George Fox (founder of the Quakers) would hide in a cupboard when chased by the King's men. Onward by Brameskew, across two fields to a lane then take the path to the left just before Nether Bainbridge farmhouse, across two fields to Hole House Farm. Go through the farmyard between two houses, through the gate then left towards the River Lune. Go over Fisherman's Bridge and walk up the steep slope up the field to Goodies, cross the road, through the gate and over the fields up the hill for 1 mile to the road. Turn left and in 300 yards you will find Foxes Pulpit on the left. This is where George Fox preached to 1,000 people in 1652.



Foxes Pulpit



Friends Meeting House

Walk down the road with a bungalow on your left to the first house on the left (Newfield Farm). Turn sharp left down the lane and then right over a stile down two small fields, over a small concrete bridge then right, down through the gate and make for the big tree on the left, then follow the line of big trees downhill to the stile into Hawkrigg Wood (you may see roe deer and a large badgers' set in the wood). Go over the road onto the path to Lincoln's Inn onto the road and over the bridge.

For the 4½ mile walk take the first footpath on the left, walk up the riverside to Low Branthwaite and trace your steps back to Ash Hining.



For a more detailed map we recommend that you use the OS Explorer OL19 Map

For the longer walk turn right over the bridge along to Luneside Farm, through the farmyard and down the lane, across two fields to a stile on the left hand side of the field, down the lane to The Oaks (a cluster of houses). Make an almost u-turn at High Oaks and cross two fields to the A683. Turn left and follow the road for ½ a mile with the lane to Brigflatts on your right (Friends Meeting House built in 1675).

Retrace your steps back up this lane and turn left and after 200 yards take the lane on your right to Ingmire. At the main road (A684) turn left. Walk for ¼ mile right onto Slack's Lane and then first right up the farm lane to Underwinder. At the end of the house on the left take a narrow stile on left through the gate and across the fields into Ash Hining.

WALK 2

Winder & Arrant Haw - 5.1 miles **Strenuous**

From Ash Hining turn right onto the road up the hill for 200 yards and at the seats turn left (Green Lane). Take the fell gate right along the wallside for 150 yards then follow the path to the left up Winder, 1,500 feet to the trig point. Look north to see Arrant Haw at 1,950 feet with a good footpath to follow, first left up to summit (2 miles).

On a clear day there are fine views of the Lakeland Fells, Pennines and Morecambe Bay. Blackpool Tower can also be seen on a clear day.

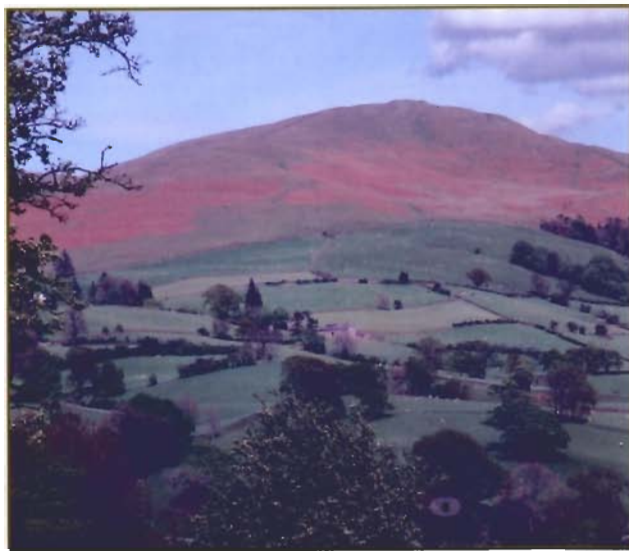
From Arrant Haw top head in a westerly direction down hill into a hollow and keep right handed up a short incline with a small pile of stones on top of the hill. Facing west head down hill onto the footpath which goes within 100 yards of a sheepfold at Bland (3 miles) - look for the sheepfold.

On a snowy day the horse of Bush Howe can be seen (a stone bed shaped like a horse was to guide the Vikings inland from Morecambe Bay).

Follow the path past the sheepfold on your right to Ellermire Beck, through a gate on your left down the fields on a farm track to Birkhaw farmyard and down the lane to the road (3.9 miles). Turn left along the road and in just over a mile you will reach Ash Hining (5.1 miles).



For a more detailed map we recommend that you use the OS Explorer OL19 Map



Ash Hining with Winder behind



View from Winder to Arrant Haw



The Sheepfold

WALK 3

Sedbergh, Farfield Mill & Birks - 8½ miles **Moderate**

From Ash Hining at the bottom of the yard take a sharp right across the paddock, through the gate and follow the wall to the road. Right up the hill for 200 yards with foot-path over the wall on the left. Go down the field past a shed with stile on the right. Turn left down the field to the bottom left hand corner to a small gate over the wall.

Turn sharp left and follow the hedge to a gate on the left hand side, then sharp right underneath the old railway bridge and follow the path to the river and A684. Cross the road by a stile on the left before the bridge to Luneside Farm. Go through the farmyard and down the lane across two fields to a stile on the left hand side of the field and down the lane to Oaks (a cluster of houses). Make an almost u-turn at Oaks across two fields to the A683. Turn left and follow the road for a ¼ of a mile. Take the second footpath on the right (Dales Way) and follow the river for approximately 1 mile to Birks Mill. Go up the road to Birks (hamlet). Turn right by the big house on the left and follow the river by Bruce Lock and through the wood to the road.

Turn right over the bridge and sharp left following the river to New Bridge. Turn right along the road and after ⅓ mile turn left on a narrow tarmac road to Mill Cottages. Turn right past the cottages but before the bridge to Farfield Mill Arts and Crafts Centre and Café. Retrace your steps to Mill Cottages and turn right over Garsdale Bridge to A683.

Turn left over straight bridge then sharp left and follow the river to New Bridge (A684). Turn right up the road to the T-junction then left into Sedbergh town. At the Y-junction with Westwood Books on the right go up the lane and take the first path on the left hand side up to Fell Gate (seats). Turn sharp left along the fell bottom with Lockbank Farm on the left. Climb up and follow the path above Nursery Woods on the left, then make for the fell wall and follow to a gate (Green Lane).

Follow this down to Ash Hining.



For a more detailed map we recommend that you use the OS Explorer OL19 Map



Viaduct near Low Branthwaite



Farfield Mill